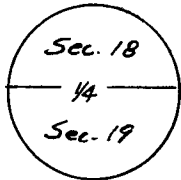


CERTIFIED LAND CORNER RECORDATION

T 19 N, R 69 W.

DESCRIPTION OF CORNER EVIDENCE FOUND, AND ORIGINAL RECORD (If known)

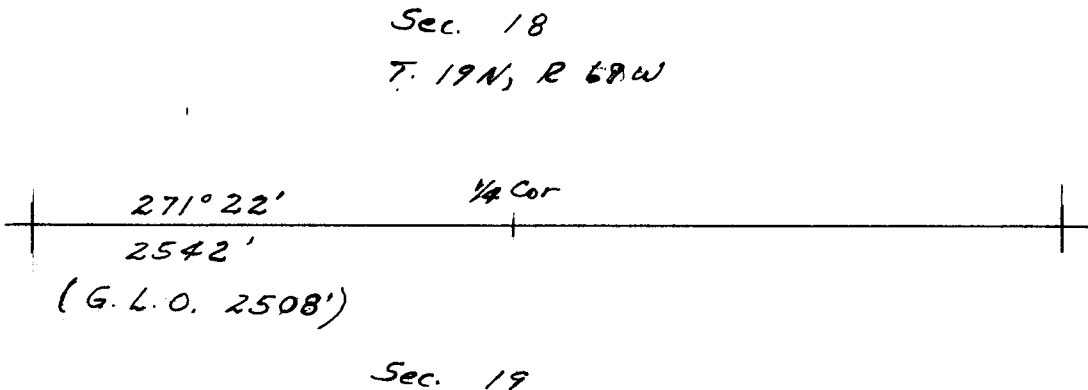


Found Grayish stone 19" X 11" X 5" with 1/4 mark in north face  
 set in mound of stone and in old east west fence.  
~~Original Monument described as~~

DESCRIPTION OF MONUMENT AND ACCESSORIES ESTABLISHED TO PERPETUATE THE ORIGINAL LOCATION OF THIS CORNER:

Set a No. 5 Rebar with an Aluminium Cap at North face of stone. Left stone in place as a reference Monument.

SKETCH, WITH COURSE AND DISTANCE TO ADJACENT CORNER IF DETERMINED IN THIS SURVEY.  
 (May Sketch or Paste Reproduction on Reverse Side.)



I, Edward C. Fry certify that I have carefully performed ~~or reviewed~~ the work done on the diagrammed corner as reported on this recordation form and approve the same.

Edward C. Fry P.E./L.S. 662  
 Signature of Surveyor Registration No.

STATE OF WYOMING,

Office of Clerk and Recorder,

County of Laramie

594248

This "corner record" was filed for record on the \_\_\_\_\_ day of OCT 2 1988, 19\_\_\_\_, was noted on the cross-index plat and is assigned page No. \_\_\_\_\_, in book No. \_\_\_\_\_.

Jan C. Whithead  
 County Official

|                   |                       |              |              |            |
|-------------------|-----------------------|--------------|--------------|------------|
| Photographed..... | Cross Index No. _____ | T. _____     | R. _____     | Mer. _____ |
| Indexed.....      | _____                 | T. _____     | R. _____     | Mer. _____ |
| Posted.....       | _____                 | T. <u>19</u> | R. <u>70</u> | Mer. _____ |
| Assessor.....     | _____                 | T. _____     | R. _____     | Mer. _____ |
|                   |                       | T. _____     | R. _____     | Mer. _____ |